



With the aesthetic side, the protective elements contribute to partition longevity. Several type of handrails are proposed.

They are designed to protect panels in areas where the traffic and the flow are intensive like in corridors.

Characteristics

These wall bumper protections are designed to protect the panel faces in areas where the traffic is intense like delivery or traffic corridors...

They are tested to resist to shocks, to the corrosion and to the time.

References proposed

Aronde 170 with damper - Aronde 170E without damper

Fixation by pre breakthrough aluminium leg (every 750 mm 29.5")

Long damper accepting a shock from 250 kg 551 lb to 5 km/h 3.1 mile/h

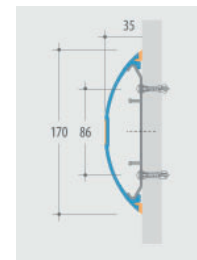
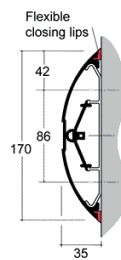
Airtight flexible lips up and down

Length 4 m 13.1'

Height : 170 mm 6.7"

Thickness : 35 mm 1.4"

Fire class M1



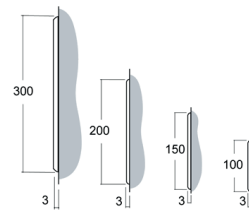
Classic Lign 100A - 150A - 200A - 300A

Fixing directly on partition with adhesive

Length 4 m 13.1'

Height : 100 mm 3.9", 150 mm 5.9", 200 mm 7.9" or 300 mm 11.8"

Thickness : 3 mm 9.8'



Aqua Lign 203E - 127E with damper

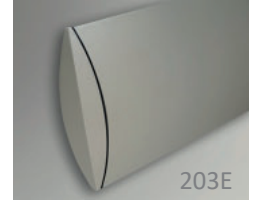
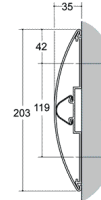
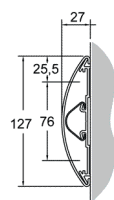
Fixation by pre breakthrough aluminium leg (every 600 mm 23.6")

Length 4 m 13.1'

Height : 203 mm 8" and 127 mm 5"

Thickness : 35 mm 1.4" or 27 mm 1.1"

Fire class M1



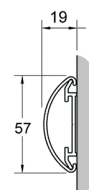
Aqua Lign 57

Length 4 m 13.1'

Height : 57 mm 2.2"

Thickness : 19 mm 0.7"

Fire class M1



Cladding and connection accessories complete the range to improve the finish.
See colour chart data GSP-1011.