

DORMA line, aluminium silver colour :

Door closer TS91

Cam action door closer with sliding arm, complied with EN 1154 and carries the CE mark, no visible fixing screws in front, protected by a cover, power force EN 3.

Strongly decreasing resisting at the opening, from the first degrees of the door opening.

Closing speed and final stroke independently adjustable in continuous with valves.

Mounting plate optional.



Door closer TS92

Sliding door closer, with came action.

Rapidly decreasing opening torque.

Final stroke and closing speed adjustable, closing power adjustable between EN 2 and EN 4.

Complied with EN 1154, EN 1155 and carries the CE mark.

Door closer TS93

Design Contour sliding door closer, complied with EN 1154, En 1155 standard and carries the CE mark, with cam action technology and rapidly decreasing opening torque.

Closing speed and power adjustable.

Final stroke adjustable.

Adjustable hydraulic back check at the opening and delayed action at closing.

Mounting bracket with universal fixing hole system. Left-right reversible.



	TS91	TS92	TS93	GR500
sliding arm	yes	yes	yes	yes
back check	no	no	yes	yes
'EN' force power	3	2/4	2/5	3/5
power in Nm at point 0	20 14.75 lbf.ft	13 to 28 9.6 to 20.7 lbf.ft	17 to 40 12.5 to 29.5 lbf.ft	
adjustable power	no	by screw	by screw	by screw
L x h in cm maxi / leaf	93 x 204 3.05' x 6.7'	103 x 224 3.4' x 7.3'	113 x 224 3.7' x 7.3'	
final stroke	7° at 0°	7° at 0°	7° at 0°	15° at 0°
mechanical stop	optional	optional	optional	optional



Door closer GR500 GROOM in stainless steel

For door width 1250 mm 4.1' and of weight 100 kg 220 lb maximum.
Complied with EN 1154 and carries the CE mark.

Fire-break certification complies with EN 1634.

High flexibility at the opening thanks to its off-centre gearwheel technology.

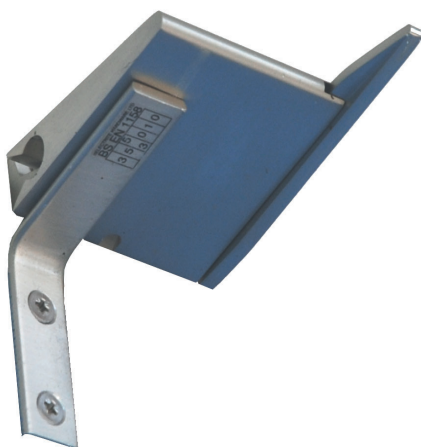
Adjustable closing speed and final stroke with awl screw.

Brake at the opening in series and adjustable with awl time delay at optional.

Aesthetic thanks to its arm with no visible fixings.

Door closer 2 leaves closing selector

It is designed to ensure the closing of 2-leaves doors in the good order.



Independent closing selector

It is designed to ensure the closing in the good order of 2-leaves doors with independent door closers.