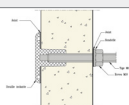


# Possibilities of hanging concentrated vertical loads

Values given for panels made with sheet facings and polyurethane foam.

## Fastener on vertical partition (pure shearing)

| Description  | Allowed loads | Ultimate load  |
|--|---------------|----------------|
| Screws :   |               |                |
| 1 metallic screw $\varnothing$ 3,9 (drilling $\varnothing$ 3)  | 25 daN        | $\geq$ 75 daN  |
| 1 metallic screw $\varnothing$ 4,85 (drilling $\varnothing$ 4)   | 30 daN        | > 100 daN      |
| Plate 100 x 100 fixed with :   |               |                |
| 4 rivets $\varnothing$ 3,9   | 100 daN       | $\geq$ 300 daN |
| 4 rivets $\varnothing$ 4,85  | 120 daN       | >300 daN       |
| Rivets :   |               |                |
| 1 rivet $\varnothing$ 4 (drilling $\varnothing$ 4)   | 30 daN        | $\geq$ 100 daN |
| 1 rivet $\varnothing$ 5 (drilling $\varnothing$ 5)   | 35 daN        | > 120 daN      |
| Plate 100 x 100 fixed with:  |               |                |
| 4 rivets $\varnothing$ 4   | 120 daN       | $\geq$ 350 daN |
| 4 rivets $\varnothing$ 5   | 140 daN       | > 400 daN      |
| Rivet nuts   |               |                |
| Rivet nut M8 (drilling $\varnothing$ 11,2)   | 50 daN        | $\geq$ 400 daN |
| Rivet nut M10 (drilling $\varnothing$ 12,1)  | 60 daN        | $\geq$ 400 daN |
| Insulating sleeve  |               |                |
| Insulating sleeve + threaded rod M10   | 130 daN       | $\geq$ 400 daN |
| Angle iron   |               |                |
| Angle iron 5/10 <sup>th</sup> dim. 1200 x 35 x 35 fixed with 1 rivet $\varnothing$ 4 every 200 mm          | 150 daN       | $\geq$ 400 daN |
| Angle iron 8/10 <sup>th</sup> dim. 1200 x 50 x 35 fixed with 2 rows of rivets $\varnothing$ 4 every 200 mm | 250 daN       | $\geq$ 600 daN |



## Suspension to ceiling (pure traction)

| Description  | Allowed loads | Ultimate load  |
|--|---------------|----------------|
| Screws :   |               |                |
| 1 metallic screw $\varnothing$ 3,9 (drilling $\varnothing$ 3)  | 8 daN         | $\geq$ 25 daN  |
| 1 metallic screw $\varnothing$ 4,85 (drilling $\varnothing$ 4) | 10 daN        | $\geq$ 30 daN  |
| Rivets :   |               |                |
| 1 rivet $\varnothing$ 4 (drilling $\varnothing$ 4)             | 12,5 daN      | $\geq$ 40 daN  |
| 1 rivet $\varnothing$ 5 (drilling $\varnothing$ 5)             | 17,7 daN      | $\geq$ 50 daN  |
| Plate 100 x 100 fixed with :                                   |               |                |
| 4 rivets $\varnothing$ 4                                       | 50 daN        | $\geq$ 150 daN |
| 4 rivets $\varnothing$ 5                                       | 70 daN        | $\geq$ 200 daN |
| Rivet nuts   |               |                |
| Rivet nut M8 (drilling $\varnothing$ 11,2)                     | 25 daN        | $\geq$ 75 daN  |
| Rivet nut M10 (drilling $\varnothing$ 12,1)                    | 35 daN        | $\geq$ 120 daN |
| Insulating sleeve  |               |                |
| Insulating sleeve + threaded rod M10                           | 150 daN       | > 450 daN      |